



# SRR

6  
REDHEUGHS  
RIGG  
EDINBURGH EH12 9DQ

TO LET  
HIGH QUALITY  
OPEN PLAN OFFICE  
367 SQ M (3,953 SQ FT)





## Location

Strategically situated at the centre of the West Edinburgh business park area, 6 Redheughs Rigg occupies a prominent location within the successful Edinburgh West Office Park.

The area has outstanding transport links, being within 5 minutes of Scotland's motorway network, the City Bypass and less than 10 minutes drive from Edinburgh Airport. The area further benefits from the new tram network, providing access to Edinburgh Airport within 10 minutes and the city centre within 20 minutes. The nearest tram stop is less than 10 minutes' walk away.

The location is extremely well served by public transport, with 6 bus services running immediately adjacent to the development, and 3 rail stations, Edinburgh Park, Edinburgh Gateway and South Gyle each less than 10 minutes' walk away. Staff amenities are excellent with the highly successful Gyle Shopping Centre less than 500 metres from the property.

Consulting engineers Amey have taken full advantage of the location and occupy the entire ground floor. Other occupiers in the building include Johnston Smillie and Acoura. High profile organisations located nearby include HSBC, RBS, Lloyds Banking Group and the Scottish Government.

## Description

6 Redheughs Rigg provides high quality open plan office accommodation within a pavilion style building arranged over 3 floors with a feature central atrium providing generous natural light.

The property was comprehensively refurbished in 2009 and provides the following specification:

- Attractive and spacious reception foyer
- 8 person passenger lift
- Raised access floors
- Suspended ceiling with PC compatible and diffused lighting
- VRF comfort cooling supplemented by gas fired central heating
- Male, female and disabled toilets at each level
- Energy Performance Rating of 'C'

An additional refurbishment of the entrance and reception area was carried out in 2017 to further enhance the amenity of the building.

## Accommodation

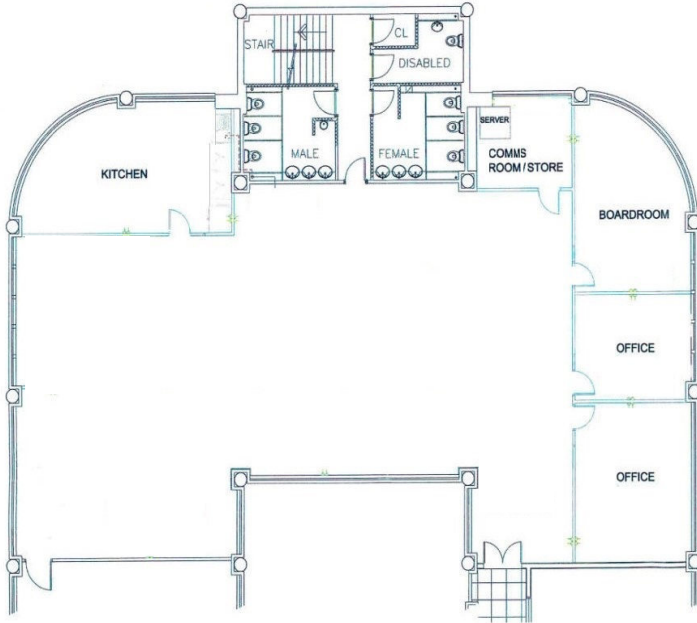
In accordance with The RICS Code of Measuring Practice (6th Edition), the building provides the following approximate net internal floor areas:

---

Second Floor	367 sq m	3,953 sq ft	11 spaces
--------------	----------	-------------	-----------

---

Car parking is available at a ratio of 1:359 sq ft, equal to or better than the majority of competing schemes.



**3,953** SQ FT

(367 SQ M)





## Lease Terms

Highly competitive quoting terms are available on request.

## Viewing

To arrange a viewing or for further information please contact either of the joint letting agents:-

Angus Thomson  
 angus.thomson@ftlinden.com  
 John Morton  
 John.morton@ftlinden.com



Mike Irvine  
 mike.irvine@savills.com  
 DDI 0131 247 3817  
 Jeremy Tolley  
 jtolley@savills.com  
 DDI 0131 247 3745



The Agents for themselves and for the vendors or lessors of this property whose agents they are give notice that: (i) the particulars are set out as a general outline only for the guidance of the intended purchasers or lessees and do not constitute, nor constitute part of, an offer or contract; (ii) all descriptions, dimensions, reference to condition and necessary permissions for use and occupation, and other details are given without responsibility and any intending purchasers or tenants should not rely on them as statements or representations of fact but must satisfy themselves by inspection or otherwise as to the correctness of each of them; (iii) no person in the employment of the Agents has any authority to make or give any representations or warranty whatever in relation to this property. Date of publication: October 2018

